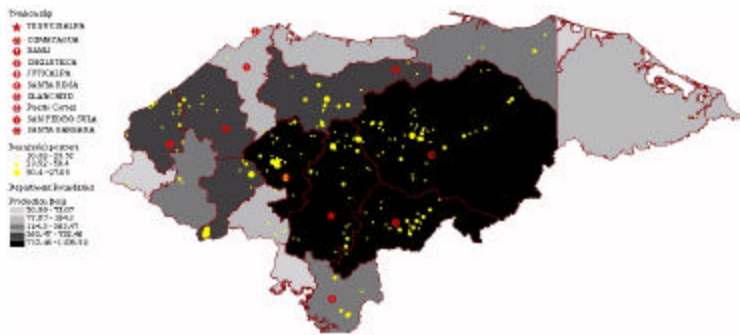
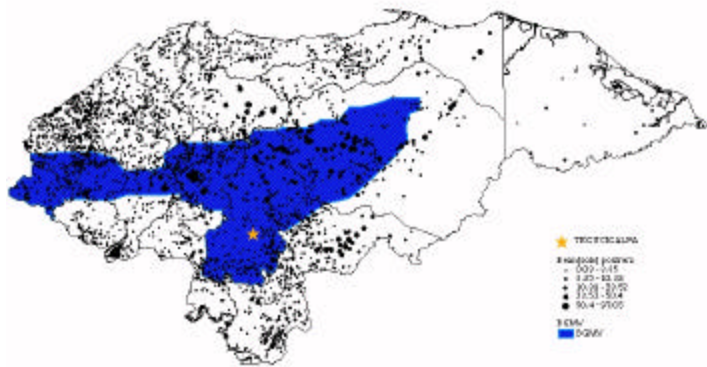


Map 1: Bean production (1993) areas in Honduras (postrera)



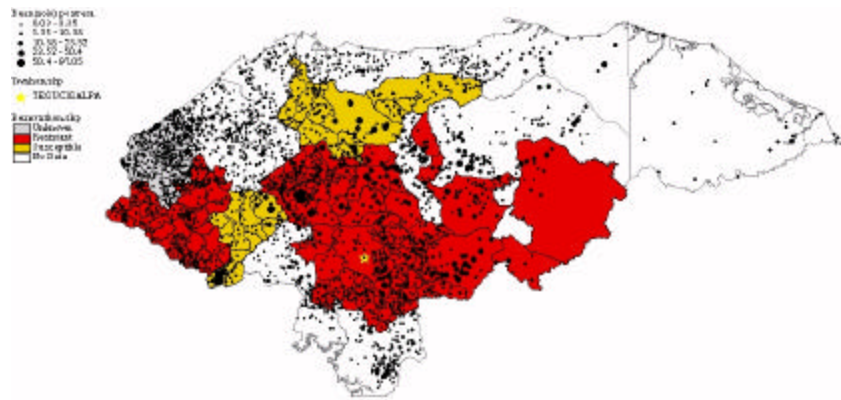
The darker the area the greater the bean production.

Map 2: Virus Area with Beans

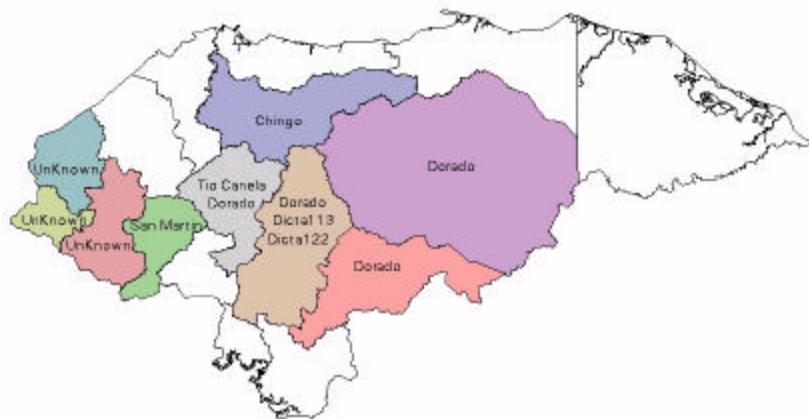


Note blue striped area contains BGMV virus
Source: Morales (1994)

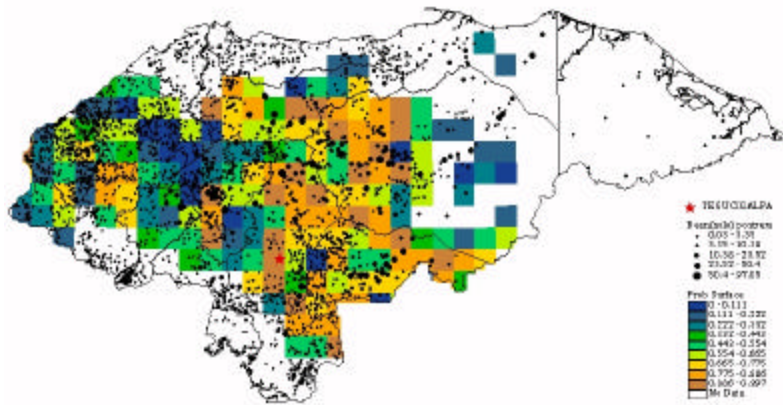
Map 3: Areas of adoption of new varieties mapped as resistance to BGMV



Map 3a: Varieties being used in each department



Map 4: Virus probabilities



Map 5: Departments included in the study area

