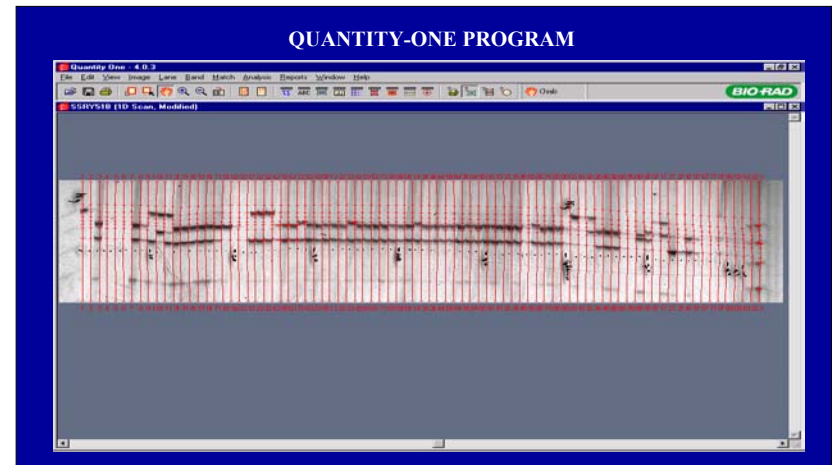


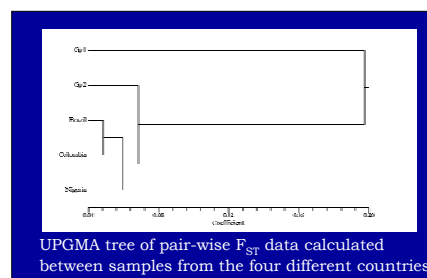
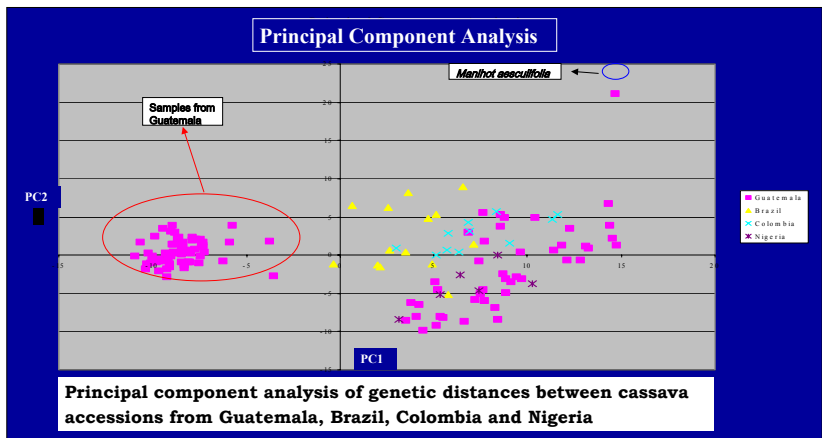
# Simple Sequence Repeat (SSR) Assessment of Genetic Diversity of Local Cassava Varieties

## Cassava Genetics

The molecular diversity network of cassava (MOLCAS) comprises of scientists drawn from institutes in Africa, Latin America, Europe and the USA. In its four years of existence, MOLCAS has studied diversity of local varieties in Tanzania, Nigeria, Ghana, Uganda, Guatemala, Cuba, Peru, Sierra Leone and a subset of the World germplasm bank held at CIAT. The ultimate aim of these studies is to identify and exploit useful variability for increased crop productivity and value addition.



DATA BASE  
STATISTIC ANALYSIS

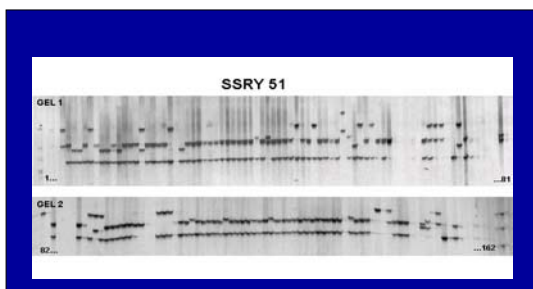


Intra-population and inter-population estimates of genetic diversity parameters of cassava land races from different agro-ecologies of Guatemala, Brazil, Colombia, Nigeria

Pop	n	No. of Loc	No. of loci Pol.	Percent of Pol. Loc	Average No. of alleles/Loc	Average No. of alleles/Loc. Pol.	HO	HE	Hec.p
G1	24	33	28	84.8	2.8	3	0.6273	0.41	0.419
G2	74	33	33	100	5.2	5.2	0.5895	0.6066	0.6107
BRA	12	33	32	97	4	4.1	0.5562	0.5745	0.6013
COL	8	33	33	100	4.1	4.1	0.5912	0.6111	0.6555
NIG	4	33	31	93.9	2.9	3.1	0.648	0.5085	0.6067
mean		33	31.4	95.15	3.8	3.87	0.6024	0.5422	0.5786
std		6.28	0.98	0.91	0.0358	0.0845	0.0918	0.2468	

Ho: observed heterozygosity He: Average gene diversity Hec.p: Average gene heterozygosity corrected for small samples sizes

## Development of a Web Accessible Data Base for SSR Marker Assessment of Diversity of Local Cassava Varieties



Accession Code	Country	Region	Source	Year of Collection	Agroecology	Village	Y	S	A	N
1	Guatemala	San Juan	San Juan	2002	Agroecology	San Juan	178	100		
2	Guatemala	San Juan	San Juan	2002	Agroecology	San Juan	178	100		

Marker Code	Marker Weight	Publication	Alleles	Locus	Image
SRRY 1	207	Fraser et al. (2001)	10	SSR	
SRRY 2	207	Fraser et al. (2001)	10	SSR	
SRRY 3	207	Fraser et al. (2001)	10	SSR	
SRRY 4	207	Fraser et al. (2001)	10	SSR	
SRRY 5	207	Fraser et al. (2001)	10	SSR	

Marker Code	Marker Weight	Publication	Alleles	Locus	Image
SRRY 1	207	Fraser et al. (2001)	10	SSR	
SRRY 2	207	Fraser et al. (2001)	10	SSR	
SRRY 3	207	Fraser et al. (2001)	10	SSR	
SRRY 4	207	Fraser et al. (2001)	10	SSR	
SRRY 5	207	Fraser et al. (2001)	10	SSR	

Population	n	No. of Loci	No. of Alleles	Pol. Loci	Average No. of Alleles/Loc	Average No. of Alleles/Loc. Pol.	HO	HE	Hec.p
G1	24	33	28	84.8	2.8	3	0.6273	0.41	0.419
G2	74	33	33	100	5.2	5.2	0.5895	0.6066	0.6107
BRA	12	33	32	97	4	4.1	0.5562	0.5745	0.6013
COL	8	33	33	100	4.1	4.1	0.5912	0.6111	0.6555
NIG	4	33	31	93.9	2.9	3.1	0.648	0.5085	0.6067
mean		33	31.4	95.15	3.8	3.87	0.6024	0.5422	0.5786
std		6.28	0.98	0.91	0.0358	0.0845	0.0918	0.2468	