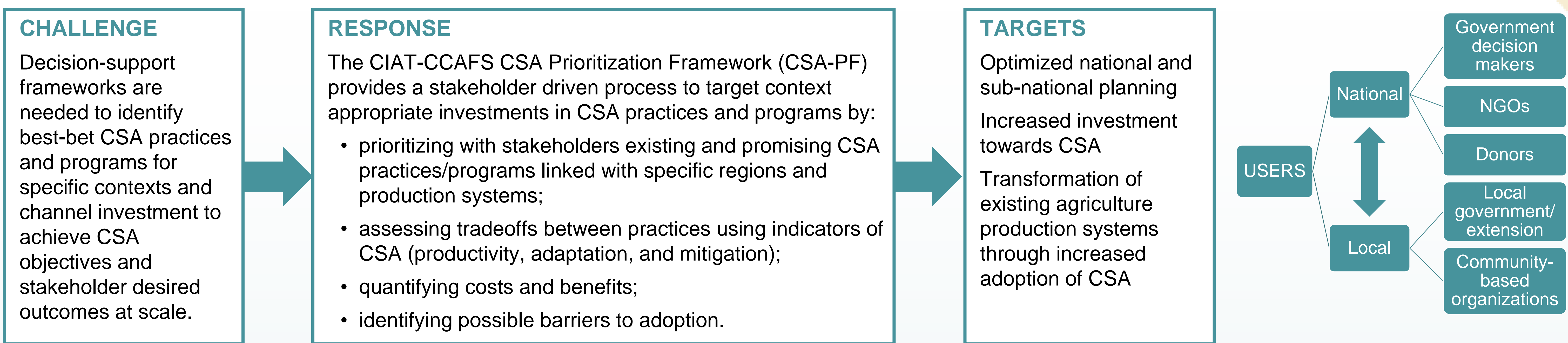


Caitlin Corner-Dolloff¹, Ana Maria Loboguerrero², Miguel Lizarazo², Andreea Nowak¹, Nadine Andrieu^{1,3}, Fanny Howland¹, Cathy Smith⁴, Jorge Maldonado⁵, John Gomez⁵, Osana Bonilla², Todd Rosenstock⁶, Deissy Martinez², Evan H. Girvetz¹, Andrew Jarvis^{1,2}

¹ International Center for Tropical Agriculture (CIAT), Cali, Colombia; ² CGIAR research program on Climate Change, Agriculture, and Food Security (CCAFS), Cali, Colombia; ³ Centre de coopération internationale en recherche agronomique pour le développement (CIRAD), Montpellier, France; ⁴ Twin Oaks Research, Flinton, PA, USA; ⁵ Universidad de los Andes, Bogotá, Colombia; ⁶ World Agroforestry Center (ICRAF), Nairobi, Kenya

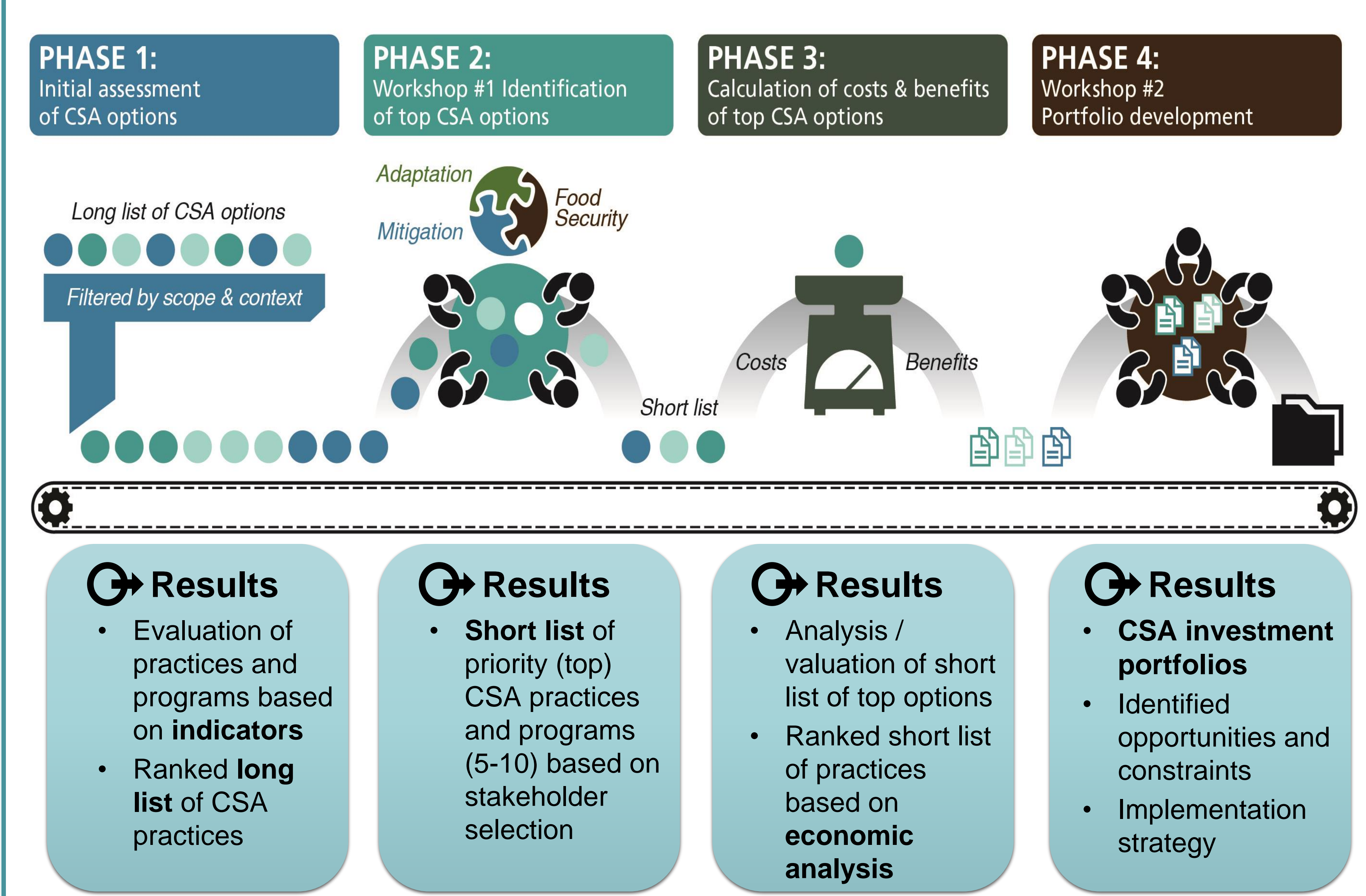


Implementing CSA-PF

The framework has been designed as a four phase process that can be modified for use at any level of decision-making. A long list of CSA practices, applicable to the scope of the assessment, is established in the first phase and is narrowed through each subsequent phase until investment portfolios are identified. Stakeholders have the ability to:

- select the **metrics** for evaluating CSA
- weight the metrics and goals of CSA
- evaluate **costs and benefits** of options
- balance outcomes of portfolios given **user preferences**
- assess **barriers** to adoption
- identify **pathways to implementation**

The CSA-PF is currently being piloted in Guatemala, Mali, and Colombia demonstrating the applicability of the framework across regions and levels.



Guatemala USER: Ministry of Agriculture, Livestock, and Food

The ministry is targeting the 'dry corridor' region of the country due to a severe drought in 2014. Given this disaster a policy was implemented to incentivize adoption of various adaptation practices. The CSA-PF is being used to assess and validate the previously incentivized practices, and prioritized practices will be promoted by government extension.



Mali USER: Climate change national platform

Three key zones in the country were identified, differentiated by climate change impacts and productions system, with the northern dry region being prioritized. The portfolios will be used by the platform to create technical information for use by farmers and for inclusion in cross-ministerial CSA programs to incentivize adoption across the landscape.



Colombia USER: Local organization Foundation Rio Las Piedras

This local community group in the Department of Cauca has already been implementing and assessing CSA practices being conducted by local farmers. A full cost-benefit analysis has not been done though, and the outcomes of this from the CSA-PF will assist the community in a) identifying how to improve practices and b) focus on scaling up high outcome practices.



Lessons Learned

- Decision-support processes should integrate the best scientific evidence possible, but move forward in the face of data limitations. Using qualitative assessments with experts was viewed as appropriate.
- Visualization of tradeoffs needs to be rigorous yet simple for stakeholders.
- Engaging in the process itself shifts knowledge, awareness, and integration of actors related to CSA.
- Regardless of the level of key user, integration must occur across levels to understand:



- Stakeholder criteria for prioritization, not just the three CSA goals, should always be explicitly identified and built into the assessment of practices and programs starting in phase 1.
- CSA investment portfolios must be context specific, with reference to specific areas, production systems, and threats. Addressing uncertainty and decisions over various timescales should be further developed.

We thank our partners and contributors in Guatemala (Mario Fuentes¹, Mario Mejia², and Edwin Rojas²), Mali (Bouguna Sogoba³ and Robert Zougmore⁴), and Colombia (Liliana Recaman⁵) whose engagement has been crucial for the implementation of the CSA-PF and for the development of many lessons learned. We also acknowledge the financial and technical support of CCAFS to design and pilot the process. Photos: Neil Palmer (CIAT)

¹CGIAR Research Program on Climate Change, Agriculture and Food Security (CCAFS) - Latin America; ²The Ministry of Agriculture, Livestock and Food, Guatemala; ³The Malian Association of Awakening on Sustainable Development (AMEDD); ⁴CGIAR Research Program on Climate Change, Agriculture and Food Security (CCAFS) - West Africa; ⁵The Rio Las Piedras Foundation, Colombia

Contact:
c.corner-dolloff@cgiar.org